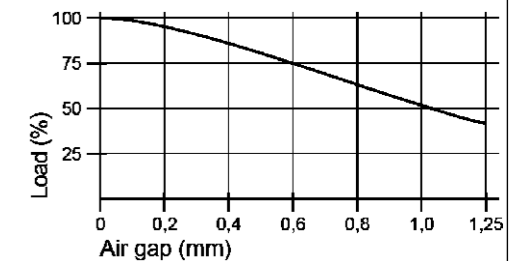
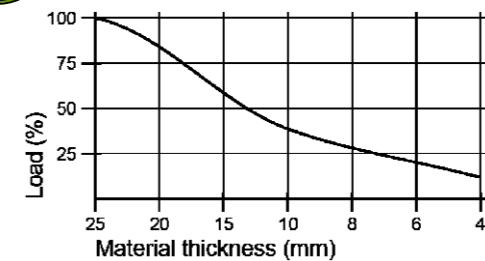
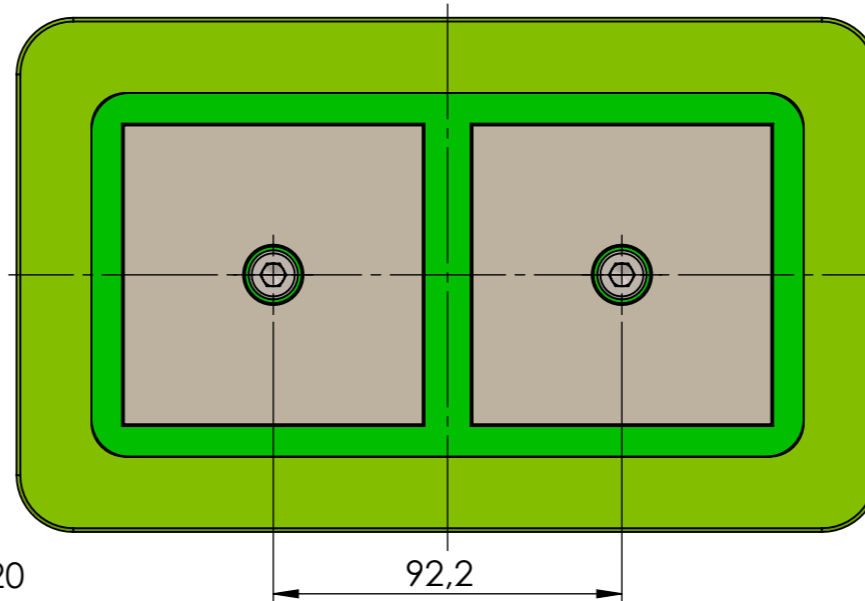
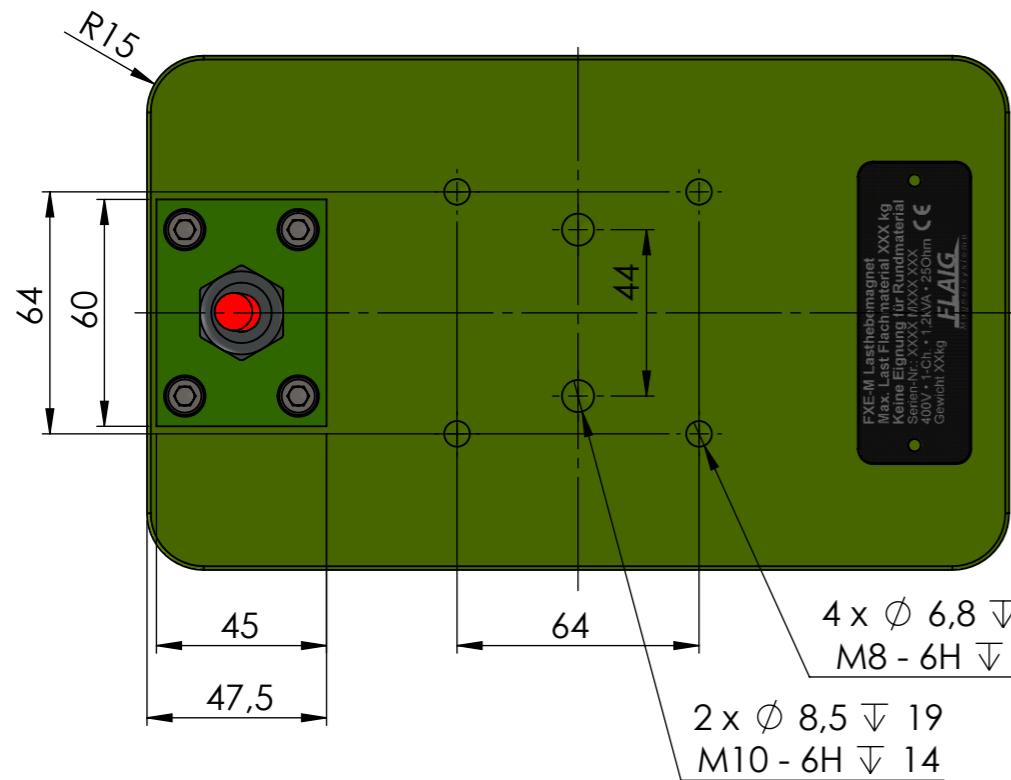
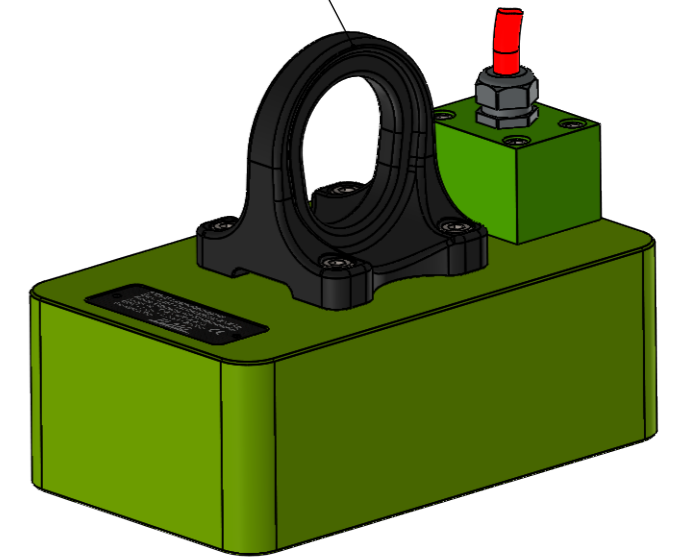


Crane lifting eye optional  
Article number: 911010605



4 x  $\varnothing 6,8 \nabla 20$   
M8 - 6H  $\nabla 16$   
2 x  $\varnothing 8,5 \nabla 19$   
M10 - 6H  $\nabla 14$

Schutzvermerk nach DIN ISO 16016 beachten!  
Nachdruck nur mit unserer Genehmigung!  
All rights reserved according to DIN ISO 16016!  
Reprint with our permission only!

$\frac{3,2}{\sqrt{\quad}}$	$\frac{-0,05}{-0,2}$	tolerance	material:	weight: 17.30
		ISO 7168 M	drawing no.:	0017420
		date	name	description: <b>FXE-M 500-80</b>
drawn	05.05.2022	TW		
appr.	11.05.2022	TW		

Specification FXE-M 500-80

Nominative Force: 18kN	lifting capacity EN 13155/WLL
Materialthickness >25mm (100%)	500kg
2,4kVA	
U: 380-480V Pulse	Protection Class IP 65
R: 11,4 $\Omega$	Protectiv Earth SK I

**FLAIG**  
Magnetsysteme  
www.flraig-te.de

part no.:	10610502	sheet	1 / 1
scale:	1:2	Status:	Freigegeben